

- ◆ ISO9001:2008质量管理体系认证企业
- ◆ ISO14000国际环境管理体系认证企业
- ◆ 国家两化融合试点企业
- ◆ 知识产权管理体系认证企业
- ◆ 广东省高新技术企业
- ◆ ISO9001:2008 Quality Management System Certification Enterprise
- ◆ ISO14000 International Environmental Management System Certification Enterprises
- ◆ National Information And Industrialization Integration Pilot Enterprise
- ◆ Intellectual Property Management System Certification Enterprise
- ◆ High And New Technology Enterprises In Guangdong



产品概览

Product overview

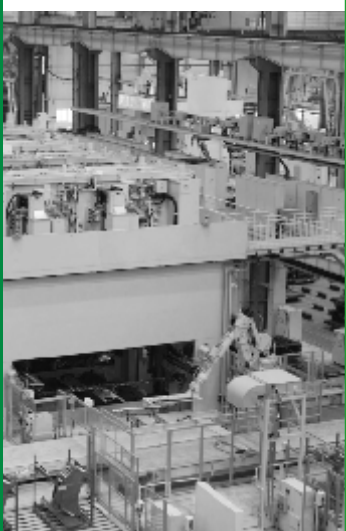
2021版



中国·广州·白云·人和·雷子克工业园
Leizig Industrial Zone.Renhe.Baiyu.Guangzhou.China

©2021雷子克(中国)有限公司版本所有。未经版本所有人事先许可，本刊的任何部均不得用于商业用途，或被复制、存储至另一个检索系统，或以任何形式或通过任何手段，无论是电子、机械手段还是影印、记录或其它方式进行传播。版权所有,未经许可不得翻印。如有改动,恕不另行通知,最终解释权归本公司所有。

©2021 Sons of thunder g version (China) co., LTD. All. Without version all prior permission, any part of the economist may not be used for commercial purposes, or to be copied, stored to another retrieval system, or in any form or by any means, whether electronic, mechanical means or photocopying, recording, or other ways To spread. All rights reserved, without permission shall not be reproduced. Are subject to change without prior notice, the final power of interpretation owned by the company.



WWW.LEIZIG.COM



三十几年来

SINCE OVER 30 YEARS AGO

一直致力于成为热管理方案的领先制造商

Always committed to becoming a leading manufacturer of thermal management solutions

雷子克leizig是一家以研发高端能源配套产品为方向，集设计、生产为一体的高新技术企业，面对日益严峻的能源问题，其产品业务涉及：能源二次利用的低温域热电材料及应用；高效能比的新能源热管理产品；新能源行业的热利用产品；新能源工业设备服务云平台。

自1990年雷子克leizig进入新能源行业以来，雷子克leizig始终致力于成为新能源行业的领先供应商，并于2016年开始拓展薄膜发电、涂料发电领域。雷子克leizig相信，先进的技术与规模化的生产相结合是企业发展的重要推动力。未来，雷子克leizig将推行产品、品牌一体战略，充分利用现有资源，强化核心技术的优势整合，推动新能源产业链的快速发展。

Sons of thunder gram leizig energy is a research and development of high-end products for the direction, set design, production as one of the high-tech enterprises, in the face of increasingly severe energy problems, its products business And: energy secondary utilization of low temperature domain of thermoelectric materials and applications. New energy efficient than thermal management products; Heat utilization of new energy industry products; New energy industry equipment service cloud platform.

Since 1990, when the sons of thunder gram leizig since entering the new energy industry, sons of thunder gram leizig committed to become a leading supplier of new energy industry, and in 2016 began to expand the film power generation, Coating field to generate electricity. Sons of thunder gram leizig believe that advanced technology combined with large-scale production is an important driving force of enterprise development. In the future, will be introduced in leizig sons of thunder gram product, brand integration Strategy, make full use of existing resources, strengthen the core technology advantages of integration, to

产品类别 Product Category



机舱环境控制
Cabin environmental control

LeizigHEX工业机械有限公司致力研发节能环保的HEX交叉型、逆流型热交换器核心，为工业、商业、新能源等领域提供了高效的优质的热利用产品。

LeizigHEX industrial machinery co., LTD., is committed to research and development of energy conservation and environmental protection HEX cross type, Counter flow type heat exchanger core, for the industrial, commercial, new energy and other fields to provide the high effect of the heat utilization of quality products.



机柜环境控制
Environmental control cabinet

LeizigETM电气机械有限公司始终专注于工业机柜的通风、制冷、除湿、热交换、加热、照明和机柜环境监控系统，已成为机柜环境控制的领先制造商。

LeizigETM electrical machinery co., LTD always focus on industry enclosure ventilation, refrigeration, dehumidification, heat, heating, lighting, and cabinet environment monitoring system, has become a leading manufacturer of environmental control cabinet.



微空间环境控制
Tiny space environment control

LeizigTE热电工程技术有限公司拥有低温领域热电领先技术，公司以“低温领域高效率的热转电利用”为产品研发宗旨

LeizigTE thermoelectric engineering technology co., LTD has low temperature field leading technology, The company take the high efficient heat transfer low temperature fields in use" for the purpose of the product research and development



专注于环境控制领域的研发

Focus on the R&D of electrical enclosure climate control field



创新一直是雷子克的企业文化，层出不穷的技术创新让雷子克永远是电气柜环境控制产品的领先制造商和方案的提供商。雷子克所有的制冷机都符合雷子克工厂标准和欧洲标准。

Innovation is at the heart of Leizig's business culture, and our unceasing drive to create new solutions for you keeps us at the forefront of enclosure climate control manufacturers and solution providers. All our products are CE compliant.

突破半导体材料的高效制冷技术

雷子克作为电气柜环境控制的领先制造商，采用新型五元半导体材料作为半导体制冷机研究的重点。就目前使用的CFCs和HFCs相比，半导体制冷，更符合雷子克的经营理念，创新成就未来。各个研究表明，半导体制冷材料现在不仅是制冷剂的代替品，且能减少二氧化碳的排放和节能环保。雷子克在使用新型五元材料的制冷机研究，COP达到1.3，高效制冷已不是停留在实验的阶段，更多产品将接踵而来。

High efficiency refrigeration technology breakthrough for semiconductor materials.

Leizig as a leading manufacturer of electrical control cabinet environment, using the new five element of semiconductor materials as the focus of semiconductor refrigeration machine. The semiconductor compared to the CFCs and HFCs refrigeration, semiconductor refrigeration is more in line with the Leizig business philosophy, innovative achievements of the future. The research shows that the semiconductor refrigerating material is not only the refrigerant substitutes and can reduce carbon dioxide emissions and energy saving and environmental protection. Leizig has studied the new type of five element refrigerating machine, and the COP has reached 1.3. Efficient refrigeration is no longer in the stage of experiment, and more products will follow.

防粉尘，无冷凝水设计的免维护制冷机

采用独特的冷凝器的散热结构，粉尘不再是我们电气工程师要考虑定期维护的遗憾，粉尘在有雷子克专利的散热器上畅通无阻，无冷凝水设计的制冷机完全达到免维护的效用，在户外和不易维护的场合更是体现雷子克设计师的用心良苦。

Dustproof, condensation and maintenance-free cooling units

Thanks to the use of Leizig's unique condenser cooling structure, you no longer need to worry about dust removal. Dust passes freely over Leizig's patented radiators, rather than collecting and building over time. The condensation-free design makes our cooling units virtually maintenance-free. In outdoor and hard to maintain settings, Leizig designers' thorough consideration ensures your equipment is kept in top condition

变革的制冷理念--压缩空气制冷

利用龙卷风的自然现象，风中心冷，龙卷风外围热的特点而开发出雷子克的压缩空气制冷器，方便客户在防爆领域和超小体积的应用场合上游刃有余。因无运动部件，无制冷剂，几乎免维护和无损坏的特点得到越来越多用户的青睐。

Revolutionary cooling ideas - compressed air cooling

Taking advantage of the natural phenomenon seen in tornadoes - cool air in the centre and warm air at the periphery - Leizig has developed the vortex cooler for application in anti-explosive and small-scale settings. Due to their lack of moving parts and refrigerant, along with their maintenance-free nature, our vortex coolers are in increasingly high demand.

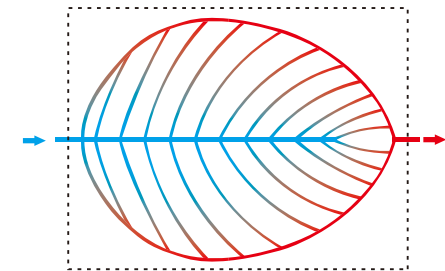


板装水冷热交换器贴心的冷却变频器

水冷板装热交换器是大功率变频器最有效的制冷方法，体积小制冷效果高的特点在机柜上发挥的淋漓尽致。在保持机柜的防护等级不变的基础上同时节省元器件的安装空间，无压缩机和风扇让机柜毫无震动并且毫无噪音，无冷凝水的设计消除电气工程师一直以来的顾虑，简便的安装让工程师轻松满足客户苛刻的工期要求。

Air-water plate heat exchanger - the thoughtful cooling inverter

Leizig's air-to-water heat exchanger is the most effective solution for highpower inverters. A key advantage is high cooling performance despite having a highly compact design. While maintaining the same high level of protection, installation space for components has been reduced. With their unique fan and compressor-free design, Leizig's air-to-water heat exchangers are both vibration-free and quiet. Their lack of condensation removes electrical engineers' age-old source of frustration and worry, and simple installation ensures engineers can easily maintain clients' strict deadlines.



气/气热交换器核心的制造

雷子克根据客户的需求制定适合于不同场合的各种尺寸的热交换器核心，薄如纸的铝箔，轻车熟路的装备，各种尺寸的交换核心等特点使雷子克广受自动化和电信行业的青睐。雷子克热管理生产线站在技术核心的最前沿，让客户忽略热交换器的核心技术的公关，轻松的设计各个场合的交换系统，最短的时间为客户提交最有效的热交换器方案。

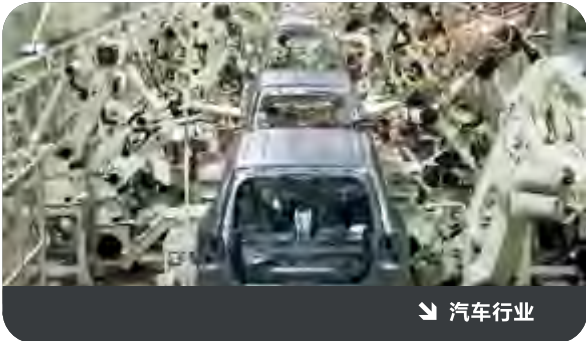
Air-air heat exchange core

Based on our clients' individual requirements, Leizig has developed a wide range of heat exchange cores in a variety of sizes. The paper-thin foil and effortless running, along with the variety of available dimensions and breadth of applications of its exchange cores has put Leizig in the spotlight of many key players in the automation and telecommunications industries. Our thermal management product lines stand at the forefront of core technologies. Leizig's clients can rest assured that we will provide the most efficient solution in the shortest time for an infinite range of individual applications.



研究开发和试验设备

The research and development and experiment equipment



焓差测试环境室

Enthalpy difference testing room

主要检验制冷机的性能（制冷量、能效比、电流、功率，不同的内外温度试验制冷机的性能）

This is where the performance of each cooling unit is run through stringent tests of cooling capacity, EER, current, power and overall performance under a wide range of interior and exterior temperatures.



可编程高温试验箱

Programmable high temperature test box

主要用于测试和确定电工、电子、产品及材料进行高温或恒定试验的温度环境变化后的参数及性能。还可以作为产品在高温环境下储存和使用的适应性测试。

It is mainly used to test and determine the parameters and properties of the electronics, electronics, products and materials after the high temperature or constant test. It can also be used as an adaptive test for storage and use of products in a high temperature environment.



恒温恒湿试验箱

constant temperature and constant humidity test box

主要用于电子零部件、工业材料、成品在研发、生产，检验各环节的试验提供恒定湿热、复杂高低温交变等试验环境和试验条件，还可以作为产品在高低温环境下储存和使用的适应性测试。

It is mainly used for providing test environment and test conditions such as constant humidity heat, complex high and low temperature alternation of electronic components, industrial materials and finished products in various aspects of R & D, production and inspection. It can also be used as an adaptability test for products stored and used in high and low temperature environment.



红外线测试

Infrared testing

为了可视化您样机在各种环境条件下的温度场并快速判断可能存在的散热问题，我们提供各种温区下的色彩化热成像资料

In order to visualize your prototype in a variety of environmental conditions and quickly determine any potential heat dissipation problems, we provide colorized thermal imaging data which clearly indicates the various temperature zones.

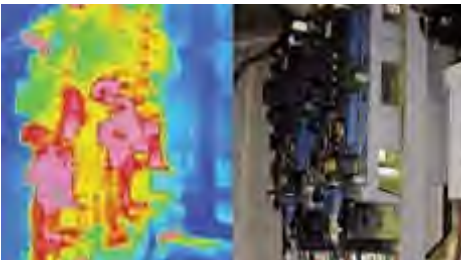


气流模拟

Airflow simulation

我们先进的CFD（流体力学计算）软件，可以根据您的设置对产品进行气流模拟，温度场和压力场的模拟结果可以直接绘成图表。这样，可以无需制造昂贵的样机就能对您的系统进行模拟

Through the application of advanced CFD (computational fluid dynamics) software, airflow simulations of both temperature and pressure fields can be conducted based on your individual settings, with a printout of simulation results provided. This does away with the need for expensive prototypes to simulate your system.

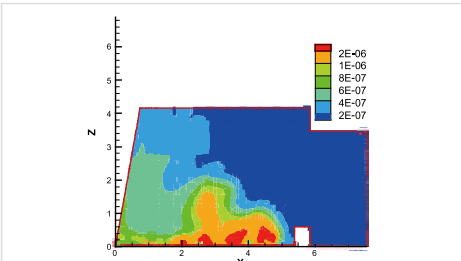


气流测试

Airflow testing

为了制造气流测试样机，我们提供测试环境并依DIN EN ISO 5167-2标准测试您的产品（提供6种不同截图，气流量3-2000m³/h的检测条件）

In order to produce the airflow sample, we provide the testing environment for your equipment and execute testing in conformity to DIN EN ISO 5167-2 standards (6 cross sections, airflow volume 3-2000m³/h).



防护等级测试 (IP, UL)

Protection class testing (IP, UL)

小型样机可以在我们灰尘室进行(IP5x)防尘测试

通过我们的喷雾设备，样机可以进行(IPx4)防水测试

我们的喷雾设备(通过UL 50认证)可以对您的样机进行(UL 50)防水测试

For small units, anti-dust tests can be conducted in our dust room (Ip5x). Using our spray facility (IPx4), samples' waterproofing can be tested. Our spray equipment can also be used to conduct UL50 waterproofing tests on your sample.



运输和震动测试

Transport and vibration testing

我们以多年的经验帮助您对样机进行运输（摔落、撞击和震动）和耐震测试（地震）

We have years of experience in helping you test the effects of transporting your equipment (drop, shock and vibration testing), as well as conducting seismic tests (earthquake testing).



噪音测试

Noise testing

根据测量标准，通过我们的噪音测量设备，测试样机的声压和声强，我们也能在装有符合ISO3744规格反射地板的隔音室进行噪音方面的测量、分析和设计

As a standard service, we test your sample for both sound pressure and intensity. We can also test your sample in our soundproof room fitted with ISO3744 specified reflective floor for noise measurement, analysis and design.



完善的售后服务

Intimate Services

可以使用的售后服务途径

Available after-sales service channels

感动客户的售后流程和专业的售后人员配合上严格的考核制度成就我们的安装，维修，保养和项目集成服务的领先性。

The customer's after-sales process and professional after-sales personnel cooperate with a strict evaluation system to achieve our leadership in installation, repair, maintenance and project integration services.s

- 拨打全国统一的客户服务电话：400-838-1990
Call the national unified customer service number:
- 公司网站下载售后服务申请表，传真到我们上海或广州的维修中心
Download the after-sales service application form from the company website and fax it to our Shanghai or Guangzhou service center
- 直接联系我们全国的销售办事处
Contact our national sales offices directly

“我们总在您身边”

We are always by your side

----感动客户的售后服务

After-sales service that touches customers

我们的服务范围从简单的电气柜过滤风扇一直到配置完整并经过测试的系统，同时我们提供按客户要求安装，保养，维修附加服务，我们努力不懈地为广大客户带来最大利益。公司内部和驻外销售人员将非常乐意为您寻找具有针对性的客户服务。

Our services range from simple electrical cabinet filter fans to fully configured and tested systems. At the same time, we provide additional services for installation, maintenance, and repair according to customer requirements. We work tirelessly to bring maximum benefits to our customers. The company's internal and overseas sales staff will be very happy to find targeted customer service for you

为了您的成功

For your success

--需要正确的电气柜环境控制产品

Need correct electrical cabinet environmental control products

不管控制柜外的环境条件，不管是单独一面柜或是整个电气车间，室内或室外应用，仪表箱或工作站，你都可以选择到合适的雷子克方案及相关产品，我们在自动化领域20年的专业经验至臻完美。

Regardless of the environmental conditions of the control cabinet, whether it is a single cabinet or the entire electrical workshop, indoor or outdoor applications, instrument boxes or workstations, you can choose the appropriate Leizike solution and related products. We have been in the field of automation for 20 years. Professional experience to perfection

您需求的整体性

The integrity of your needs

--同样是我们解决方案的特征

Is also a feature of our solution

你可以在这里找到自己所需的确切的解决方案，并从多种多样的模块化系统中挑选到符合自己独特需要的类型。雷子克提供的解决方案及相关产品将能切实迎合您的各项需要。

You can find the exact solution you need here, and choose from a variety of modular systems to the type that meets your unique needs. The solutions and related products provided by Leizike will truly meet your needs



产品目录 >>>



NEW

制冷系列(Enclosure Cooler)		11-19
壁装制冷机.....	wall mounted cooling unit	11
壁装水冷制冷机.....	wall mounted cooling unit	13
门装制冷机.....	Door mounted cooling unit	15
顶装制冷机.....	Top mounted cooling unit	17
横装制冷机	Horizontally- mounted cooling unit	17
压缩空气制冷机.....	vortex cooler	18
无线数据网关控制器.....	Wireless data gateway controller	19



热交换系列(Heat Exchanger)		21-26
壁装气/气热交换器(半内嵌/完全外挂).....	Wall mounted air/ air heat exchanger(Outdoor semi inlay/ complete external hanging)	21
顶装气/气热交换器.....	Top mounted air/air heat exchanger	23
壁装水/气热交换器.....	Wall mounted water / air heat exchanger	24
顶装水/气热交换器	Top mounted water / air heat exchanger	25
气/气热交换器核心.....		26



除湿系列(Dehumidifier)		27-28
半导体除湿机.....	Semiconductor dehumidifier	27
工业除湿机	Industrial dehumidifier	28



NEW

通风系列(Enclosure Ventilation)		29-36
壁装过滤风扇.....	Wall-mounted filter fan	29
顶装过滤风扇/风扇灯.....	Top-mounted filter fan /Top-mounted fan lamp	31
架装轴流风扇.....	Shelf-mounted axial fan	32
架装横流风扇.....	Shelf-mounted axial fan	33
内循环热点风扇.....	Inner loop hot fan	34
通风系列附件.....		35



加热系列(Cabinet Heater)		37-40
屏柜加热器.....	Cabinet heater	37
机舱加热器.....	Engine room heater	39



照明&环境控制系统(Enclosure Lighting &Monitoring)		41-46
控制柜照明系统.....	Control cabinet lighting system	41
简易照明灯.....	Simple light	43
照明系列附件.....	lighting series accessories	44
控制器.....		45
温/湿度控制器(机械式).....	Temperature controller (Mechanical)	45
温湿度控制器(电子式).....	Temperature controller (Electronic type)	45
温度控制器(电子式).....	Temperature controller (Electronic	46
温度控制器(热胀式).....	Temperature controller (thermal expansion)	46





制冷系列 EC (Enclosure Cooler)

该系列产品为满足汽车行业、饮料行业、通用设备行业以及电力行业等室外、室内的机柜的热管理需求而设计，可在5-55℃环境中持续保持机柜内温度维持在35℃左右，适应各种工况，适应多种电压规范。制冷机采用外循环正面出风，具有很高的通透性，出风口采用独特的百叶窗设计，有效的对热风进行导向，避免了冷热风短路而导致的冷热风交互恶性循环；蒸发端巧妙结构设计，保持了风水的独立两通道，极大降低了制冷机飞水而导致的危害机柜内电气元件的隐患；控制部分内置于制冷机内循环，数字化闭环温度控制系统精确控制柜内温度；制冷机内置部装风机、维护简单便捷。满足高端用户定制需求和对空间，美观、性能的需求，可选用机柜门式制冷机，门式制冷机安装后与机柜浑然一体，达到完全的集成设计；不同工况下，可选不锈钢壳体，纳米涂层或特氟龙涂层，提高制冷机的防尘防腐蚀能力。

This series of products meet the heat management requirement of the cabinet outdoor and indoor conditions of the automobile industry, the beverage industry, the general equipment industry, and the electric power industry. The design of the cooling unit can keep the temperature of the cabinet at about 35℃ at 5-55℃ ambient temperature. It also adapts to various working conditions and various voltage specifications. The cooling unit adopts external circulation, and the front outlet has high permeability. The outlet adopts a unique louver design which effectively directs the hot air and avoids the vicious cycle of air caused by the short circuit of hot and cold wind. The ingenious structure design of evaporation end, keep wind and water independent two channels. The hidden danger of the electrical components in the cabinet caused by the cooling unit's flying water is greatly reduced. The control part is built in the inner cycle of the cooling unit, and the digital closed loop temperature control system can accurately control the temperature in the cabinet. The built-in fan of the cooling unit is simple and convenient to maintain. To meet the needs of high-end user customization and the demand for space, beauty and performance, we have door-mounted cooling unit. Door-mounted cooling unit can be installed together with the cabinet to achieve a complete integrated design. Under different conditions, we have the stainless-steel shell, nanoscale coating or Teflon coating, to improve the corrosion and dust resistance of cooling unit.



一种更稳定的绿色机柜制冷机
The epitome of cool: greener and more stable



壁装制冷机 wall mounted cooling unit

NEW



- 性能特点(Features)
- 正面出风，更大面积散热，高效制冷；
 - 两个完全独立的超长空气循环系统，提供最佳气体循环，防止粉屑，灰尘等有害腐蚀性气体的侵入；
 - 全新结构设计，控制电路独立布局，风水独立通道，冷凝水导流排放；
 - 智能终端DCU，实现实时监控；
 - 两种安装方式选择：半内嵌、完全外挂
- Positive wind, greater area of heat dissipation, high efficiency refrigeration.
 - Two fully independent ultra-long air circulation systems that provide the best air cycle to prevent intrusion of harmful corrosive gases.
 - New structure design, independent layout of control circuit. Independent channel of wind and water. Condensate water has a separate pipe discharge.
 - Intelligent terminal DCU to realize real-time monitoring.
 - Two kinds of installation methods: embedded and external hanging installation.

ID.NO.	型号(半内嵌安装) Model(embedded)	可用制冷量 Available cooling capacity	尺寸 WxHxD Size WxHxD	额定电压 Rated voltage
36200001	FCC320	320W	300x560x195mm	230 VAC/50Hz
36200021	FCC600	600W	300x720x230mm	230 VAC/50Hz
36200257	FCC825	825W	330x860x213mm	230 VAC/50Hz
36200041	FCC1200	1200W	400x950x213mm	230 VAC/50Hz
36200065/36200069	FCC1600	1600W	450x1250x213mm	230 VAC/380VAC/50Hz
36200113/36200117	FCC2000	2000W	450x1250x246mm	230 VAC/380VAC/50Hz
363200227/36200281	FCC2500	2500W	450x1502x245mm	230 VAC/380VAC/50Hz
36200161/36200165	FCC3500	3500W	485x1550x349mm	230 VAC/380VAC/50Hz
36200209/36200213	FCC4200	4200W	485x1550x349mm	230 VAC/380VAC/50Hz
36200005	5FCC320	320W	300x560x195mm	230 VAC/50Hz
36200025	5FCC600	600W	300x720x230mm	230 VAC/50Hz
36200261	5FCC825	825W	300x860x213mm	230 VAC/50Hz
36200049	5FCC1200	1200W	400x950x213mm	230 VAC/50Hz
36200081/36200085	5FCC1600	1600W	450x1250x213mm	230 VAC/380VAC/50Hz
36200129/36200133	5FCC2000	2000W	450x1250x213mm	230 VAC/380VAC/50Hz
36200293/36200297	5FCC2500	2500W	450x1502x245mm	230 VAC/380VAC/50Hz
36200177/36200181	5FCC3500	3500W	485x1550x349mm	230 VAC/380VAC/50Hz
36200225/36200229	5FCC4200	4200W	485x1550x349mm	230 VAC/380VAC/50Hz

ID.NO.	型号(完全外挂安装) Model(external hanging installation)	可用制冷量 Available cooling capacity	尺寸 WxHxD Size WxHxD	额定电压 Rated voltage
36200002	FCC320P	320W	300x560x195mm	230 VAC/50Hz
36200022	FCC600P	600W	300x720x230mm	230 VAC/50Hz



ID.NO.	型号(完全外挂安装) Model(external hanging installation)	可用制冷量 Available cooling capacity	尺寸 WxHxD Size WxHxD	额定电压 Rated voltage
36200258	FCC825P	825W	330x860x213mm	230 VAC/50Hz
36200045	FCC1200P	1200W	400x950x213mm	230 VAC/50Hz
36200073/36200077	FCC1600P	1600W	450x1250x213mm	230 VAC/380VAC/50Hz
36200121/36200125	FCC2000P	2000W	450x1250x246mm	230 VAC/380VAC/50Hz
363200285/36200289	FCC2500P	2500W	450x1502x245mm	230 VAC/380VAC/50Hz
36200169/36200173	FCC3500P	3500W	485x1550x349mm	230 VAC/380VAC/50Hz
36200217/36200221	FCC4200P	4200W	485x1550x349mm	230 VAC/380VAC/50Hz
3620006	5FCC320P	320W	300x560x195mm	230 VAC/50Hz
36200026	5FCC600P	600W	300x720x230mm	230 VAC/50Hz
36200262	5FCC825P	825W	300x860x213mm	230 VAC/50Hz
36200053	5FCC1200P	1200W	400x950x213mm	230 VAC/50Hz
36200089/36200093	5FCC1600P	1600W	450x1250x213mm	230 VAC/380VAC/50Hz
36200137/36200141	5FCC2000P	2000W	450x1250x213mm	230 VAC/380VAC/50Hz
36200301/36200305	5FCC2500P	2500W	450x1502x245mm	230 VAC/380VAC/50Hz
36200185/36200189	5FCC3500P	3500W	485x1550x349mm	230 VAC/380VAC/50Hz
362002233/36200237	5FCC4200P	4200W	485x1550x349mm	230 VAC/380VAC/50Hz

ID.NO.	型号(半内嵌安装) Model(embedded)	可用制冷量 Available cooling capacity	尺寸 WxHxD Size WxHxD	额定电压 Rated voltage
36200097/36200101	TCS1600	1600W	450x1250x213mm	230 VAC/380VAC/50Hz
36200145/36200149	TCS2000	2000W	450x1250x246mm	230 VAC/380VAC/50Hz
36200309/36200313	TCS2500	2500W	450x1502x245mm	230 VAC/380VAC/50Hz
36200193/36200197	TCS3500	3500W	485x1550x349mm	230 VAC/380VAC/50Hz
36200241/36200245	TCS4200	4200W	485x1550x349mm	230 VAC/380VAC/50Hz

ID.NO.	型号(完全外挂安装) Model(external hanging installation)	可用制冷量 Available cooling capacity	尺寸 WxHxD Size WxHxD	额定电压 Rated voltage
36200017	TCS320P	320W	300x560x195mm	230 VAC/50Hz
36200037	TCS600P	600W	300x720x230mm	230 VAC/50Hz
36200273	TCS825P	825W	330x860x213mm	230 VAC/50Hz
36200061	TCS1200P	1200W	400x950x213mm	230 VAC/50Hz
36200105/36200109	TCS1600P	1600W	450x1250x213mm	230 VAC/380VAC/50Hz
36200153/36200157	TCS2000P	2000W	450x1250x246mm	230 VAC/380VAC/50Hz
36200317/36200321	TCS2500P	2500W	450x1502x245mm	230 VAC/380VAC/50Hz
36200201/36200205	TCS3500P	3500W	485x1550x349mm	230 VAC/380VAC/50Hz
36200249/36200253	TCS4200P	4200W	485x1550x349mm	230 VAC/380VAC/50Hz

壁装制冷机 wall mounted cooling unit



性能特点(Features)

- 柜体内外空气循环完全隔绝，保持内循环的密封性，避免外界水汽及灰尘的侵入；
- 防雨、防雷、防虫、防盗、防辐射，为户外柜带来最好的保障；
- 可在一定范围内设置所需温度，柜内温度实时显示；
- 内附485接口，配备本机功能检测及随时输送的功能；
- The inside and outside air circulation of the cabinet is completely cut off,maintaining the sealing of the internal circulation and avoiding the invasion of the outside water air and dust.
- Rain prevention, lightning protection, insect proof, anti-theft, radiation protection, the best protection for outdoor cabinets.
- The required temperature can be set in a certain range, and the temperature in the cabinet is displayed in real time.
- The 485 interface is attached, equipped with the function test and the function of delivery at any time.

ID.NO.	型号(半内嵌安装) Model(embedded)	可用制冷量 Available cooling capacity	尺寸 WxHxD Size WxHxD	额定电压 Rated voltage
36200013	TCS320	320W	300x560x195mm	230 VAC/50Hz
36200033	TCS600	600W	300x720x230mm	230 VAC/50Hz
36200269	TCS825	825W	330x860x213mm	230 VAC/50Hz
36200057	TCS1200	1200W	400x950x213mm	230 VAC/50Hz

柜装制冷机 Ark outfit machine



性能特点(Features)

- 机柜式结构，外观优雅，结构牢固；
- 双压缩机均衡稳定控制系统；
- 人性化人机操控界面，自带可调温显,实时显示柜内温度；
- 下吸出风式风路设计，出风口无冷凝水；
- 适用于大型电气柜冷却，适合组柜并柜安装
- Large cooling output,consolidated design and cabinet-style structure
- Dual compressors guarantee the steady running.
- Humanity operating interface,real-time digital temperature display in adjustable setting.
- No condensate drain due to the downward drawn-in design of air path.
- Suitable for the cooling of large-size electrical cabinet and combined cabinet mounting.

ID.NO.	型号(完全外挂安装) Model(external hanging installation)	可用制冷量 Available cooling capacity	尺寸 WxHxD Size WxHxD	额定电压 Rated voltage
30200933/30200934	FCC5000CL/FCC5000CR	5000W	600x2054x500mm	380VAC/50Hz
30200932/30200935	FCC7500CL/FCC7500CR	7500W	800x2054x500mm	380VAC/50Hz
30200888	FCC12500C	12500W	795x1973x647mm	380VAC/50Hz
30200925	FCC15000C	15000W	795x1973x647mm	380VAC/50Hz



壁装水冷制冷机 wall mounted cooling unit



性能特点(Features)

- 电柜内外空气循环完全隔绝，保持柜内的密封性，避免外界杂质进入柜内；
- 柜内温度可控，柜温实时显示；
- 附带485接口，可选4-20mA温湿度信号；
- 使用水冷板换式冷凝器，散热效果好，制冷效果比风冷高；
- 防护等级IP55，适用于极端的高粉尘，高湿度环境。
- The air circulation inside and outside the cabinet is completely isolated, keeping the sealing of the cabinet and avoiding external impurities entering the cabinet；
- Temperature in cabinet can be controlled and real-time display of cabinet temperature；
- With 485 interface, 4-20mA temperature and humidity signal can be selected.
- Using water-cooled plate exchanger condenser has better heat dissipation effect and higher refrigeration effect than air-cooled condenser;
- Protection grade IP55, suitable for extreme high dust, high humidity environment.

ID.NO.	型号(完全外挂安装) Model(external hanging installation)	可用制冷量 Available cooling capacity	尺寸 WxHxD Size WxHxD	额定电压 Rated voltage
35200196	ECW3200	3200W	485x1550x251mm	230 VAC/50Hz
35200197	ECW4300	4300W	485x1550x251mm	230 VAC/50Hz
35200198	ECW5000	5000W	485x1550x251mm	230 VAC/50Hz

门装制冷机(单门) Door mounted cooling unit (single door)



性能特点(Features)

- 与标准机柜的无缝兼容；
- 适合单门（600mm）标准柜的门安装方式；
- 通过铰链一卡即合式地装上门制冷机，达到浑然一体，隐蔽的效果；
- 模块式制冷核心，维护更趋简便快捷
- Seamless compatibility with standard cabinet
- For a single door cabinet door (600mm) mounted standard installation.
- With a hinged connection to install a door mounted cooling unit to achieve a seamless and hidden effect.
- Modular refrigeration core, quick and easy to maintain

ID.NO.	型号(半内嵌安装) Model(embedded)	可用制冷量 Available cooling capacity	尺寸 WxHxD Size WxHxD	额定电压 Rated voltage
30200149	5FCC1100DA	1100W	592x1778x190mm	230 VAC/50/60Hz
30200150	5FCC1100DB	1100W	592x1978x190mm	230 VAC/50/60Hz
30200151	5FCC1500DA	1500W	592x1778x190mm	230 VAC/50/60Hz
30200152	5FCC1500DB	1500W	592x1978x190mm	230 VAC/50/60Hz

门装制冷机(侧板) Door mounted cooling unit (side panel)



性能特点(Features)

- 与标准机柜的无缝兼容；
- 适合单门（600mm）标准柜的门安装方式；
- 通过铰链一卡即合式地装上门制冷机，达到浑然一体，隐蔽的效果；
- 模块式制冷核心，维护更趋简便快捷
- Seamless compatibility with standard cabinet
- For a single door cabinet door (600mm) mounted standard installation.
- With a hinged connection to install a door mounted cooling unit to achieve a seamless and hidden effect.
- Modular refrigeration core, quick and easy to maintain

ID.NO.	型号 Model	可用制冷量 Available cooling capacity	尺寸 WxHxD Size WxHxD	额定电压 Rated voltage
30200175	5FCC1100SA	1100W	562x1797x190mm	230VAC/50/60Hz
30200176	5FCC1100SB	1100W	562x1997x190mm	230VAC/50/60Hz
30200177	5FCC1500SA	1500W	562x1797x190mm	230VAC/50/60Hz
30200178	5FCC1500SB	1500W	562x1997x190mm	230VAC/50/60Hz



顶装制冷机 Top mounted cooling unit



- 性能特点(Features)
- 外形简洁大方，适用于中小型电气柜的冷却；
 - 纤巧外形，冷凝水零排放；
 - 自带可调温显，实时显示柜内温度；
 - 对空气流的处理非常巧妙，表现出优越的性能
 - It is simple and elegant in shape and is suitable for the cooling of medium electric cabinet.
 - Delicate appearance, zero discharge of condensed water.
 - Self-adjustable thermostat display and display the temperature of the cabinet in real time.
 - The treatment of air flow is very ingenious, showing superior performance.

ID.NO.	型号 Model	可用制冷量 Available cooling capacity	尺寸 WxHxD Size WxHxD	额定电压 Rated voltage
30200010	FCC680T	680W	600x300x350mm	230VAC/50Hz
30200011	FCC825T	825W	600x300x350mm	230VAC/50Hz
30200012	FCC1100T	1100W	600x340x400mm	230VAC/50Hz
30200013	FCC1500T	1500W	600x340x400mm	230VAC/50Hz
30200014	FCC2000T	2000W	600x460x497mm	230VAC/50Hz
30200015	FCC2500T	2500W	600x460x497mm	230VAC/50Hz
30200016	FCC3200T	3200W	782x465x583mm	230VAC/50Hz

横装制冷机 Horizontally-mounted cooling unit



- 性能特点(Features)
- 与标准机柜的无缝兼容；
 - 适合单门（600mm）标准柜的门安装方式；
 - 通过铰链一卡即合式地装上门制冷机，达到浑然一体，隐藏的效果；
 - 模块式制冷核心，维护更趋简便快捷
 - Seamless compatibility with standard cabinet
 - For a single door cabinet door (600mm) mounted standard installation.
 - With a hinged connection to install a door mounted cooling unit to achieve a seamless and hidden effect.
 - Modular refrigeration core, quick and easy to maintain

ID.NO.	型号(半内嵌安装) Model(embedded)	可用制冷量 Available cooling capacity	尺寸 WxHxD Size WxHxD	额定电压 Rated voltage
30200017	FCC225H	225W	490x300x135mm	230VAC/50Hz
30200018	FCC320H	320W	490x300x135mm	230VAC/50Hz
30200019	FCC680H	680W	590x430x176mm	230VAC/50Hz
30200020	FCC825H	825W	590x430x176mm	230VAC/50Hz

ID.NO.	型号(完全外挂安装) Model(external hanging installation)	可用制冷量 Available cooling capacity	尺寸 WxHxD Size WxHxD	额定电压 Rated voltage
30200058	FCC225HP	225W	490x300x135mm	230VAC/50Hz
30200059	FCC320HP	320W	490x300x135mm	230VAC/50Hz
30200060	FCC680HP	680W	590x430x176mm	230VAC/50Hz
30200061	FCC825HP	825W	590x430x176mm	230VAC/50Hz

备注：如有不锈钢外壳要求，请在相应的型号后面加-B；如有不同电压等级要求，请与当地雷子克工程师联系。

压缩空气制冷器 Vortex cooler



CE

- 性能特点(Features)
- 以压缩空气为能量制冷的高科技产品；
 - 压缩空气流经涡旋管后成冷，热两股气流。热气流通过涡旋管排气装置以稍高的压力排出，冷气流通过分流器导入到机箱的发热部位；
 - 体积小，重量轻，无活动部件，紧凑结构；
 - 安装简便，绝对的免维护，寿命高达25年；
 - 满足石化行业或危险场合的2G/3G防爆要求
 - Hi-tech product using ordinary compressed air as the cooling energy to create the cold air.
 - After entering the vortex,compressed air splits into two streams-hot and cold.Hot air is discharged outside at a higher pressure in the air exhausting device, and cool air is directed to the parts in need of cooling.
 - Compact structure,no movable parts,no chemical substance required,environmental-friendly.
 - Easy installation,absolute maintenance free,long service life up to 25 years,high reliability.
 - It particularly meets the anti-explosion requirement(2G/3G) in petro-chemical or other hazardous applisation field.

ID.NO.	型号 Model	可用制冷量 Available cooling capacity	尺寸 WxHxD Size WxHxD	额定电压 Rated voltage
30500007	VT180	180W	28x240mm	0.23 m³/min
30500008	VT320	320W	28x240mm	0.42 m³/min
30500009	VT530	530W	28x240mm	0.71 m³/min
30500010	VT730	730W	28x240mm	0.85 m³/min
30500011	VT850	850W	28x240mm	1.13 m³/min
30500012	VT1500	1500W	28x240mm	1.42 m³/min

制冷系列

Enclosure cooler

ID.NO.	型号 Model	可用制冷量 Available cooling capacity	尺寸 WxHxD Size WxHxD	额定电压 Rated voltage
30500001	VT180C	180W	28x240mm	0.23 m³/min
30500002	VT320C	320W	28x240mm	0.42 m³/min
30500003	VT530C	530W	28x240mm	0.71 m³/min
30500004	VT730C	730W	28x240mm	0.85 m³/min
30500005	VT850C	850W	28x240mm	1.13 m³/min
30500006	VT1500C	1500W	28x240mm	1.42 m³/min

备注：型号后带C,配套气体干燥过滤器、温控器、电磁阀。

无线数据网关控制器

Wireless data gateway controller DCU GATE



■ 性能特点(Features)

- 支持127个2.4G无线支点的数据单独通讯；
 - 支持RS485总线通讯；
 - 支持两路开关量控制输出；
 - 支持直流或交流电压输入，内置电压检测功能；
 - 采用四频GSM模块，支持全球GSM网络；
 - 集成USB接口，可随时现场配置单元内的参数
- Data separate communication support for 127 2.4G wireless pivot points
 - Support RS485 bus communication
 - Support two way switch quantity control output
 - Support DC or AC voltage input, built-in voltage detection function
 - The four frequency GSM module is used to support the global GSM network
 - Integrated USB interface, the parameters within the unit can be configured at any time.

	DCU GATE
宽电压工作范围(Wide voltage operating range)	DC/AC 9~50V 或 AC 100~250V
工作温度范围(Working temperature range)	-30℃~85℃
工作频率范围(Working frequency range)	2.400GHz~2.525GHz
发射功率可选择(Emissive power can be selected)	0dBm、-6dBm、-12dBm、-18dBm
数据传输速率支持(Data transmission rate support)	1Mbps、2Mbps



机柜环境控制选型软件



2 热交换系列 HEX (Heat Exchanger)

气气热交换器拥有一个交叉气流或逆向的塑性铝箔换热装置，该换热装置能在机柜温度超过周围温度时就将热量分散掉，外部空气通过外循环被抽入核心外循环通道，内部热风经内循环进入核心内通道，冷热风在核心内外通道壁进行热交换，外风将内部热风冷却，带走热量，两个内外循环系统被小心地分开，以保证内循环的封闭性。

水气热交换器拥有一个水气的换热器，冷却液与电柜内热风经过风扇驱动在水气换热器进行热交换，只有内循环是其特点，拥有很好的防尘、防水等效果。如冷却液加入一定防冻能力的防冻剂为工作介质，可以再低温-25至0℃范围内工作，突破传统制冷机低温难以工作的局限。

Air and air heat exchanger has a cross flow or reverse plastic aluminum foil heat exchanger, the heat exchanger can dissipate heat when the temperature in the cabinet exceed the ambient temperature. The outside air through the outer loop to be pumped into the corecirculation channel. The internal hot air enters the inner core channel through the inner circulation. Heat exchange of cold and hot air happened in the inner and outer channel wall of the core. External wind cooling the internal hot air, and the wind will take away the heat. Two internal and external circulation systems are carefully separatedto ensure the closure of the internal circulation.

The water and air heat exchanger have a water and air heat exchange device. The cooling liquid and the hot air in the cabinet are driven by thefan to heat exchange in the heat exchanger. Only the internal circulation is characterized by its good dustproof and waterproof effect. For example, if the coolant is added to a working medium with a certain anti freezing capacity, it can work at a low temperature of -25℃ to 0 ℃, breaking through the limitations of traditional cooling unit cannot at low temperature.



壁装气/气热交换器 Wall mounted air/ air heat exchanger



- 性能特点 Features
- 柜体内外空气循环完全隔绝，保持内循环的密封性，避免外界水气及灰尘的侵入；
 - 防雨、防雷、防虫、防盗、防辐射等五防功能为户外柜带来最好的保障；
 - 特别适合户外柜应用；
 - 可选加热集成功能；
 - 易如反掌的安装方式突显产品人性化，半内嵌安装或完全外挂安装。
-
- The inside and outside air circulation of the cabinet is completely cut off, maintaining the sealing of the internal circulation and avoiding the invasion of the outside water, air and dust.
 - Five protective design functions such as rain proof, lightning protection, insect proof, anti-theft, radiation protection and so on bring the best protection for outdoor cabinets.
 - Especially suitable for outdoor cabinets.
 - Optional heating integration function.
 - Installation easy which highlight the product of human nature, semi embedded installation or complete external installation.

ID.NO.	型号(半内嵌安装) Model(embedded)	可用制冷量 Available cooling capacity	尺寸 WxHxD Size WxHxD	额定电压 Rated voltage
30300209/30300210	TAP60	60W/K	403x968x158mm	230VAC/48VDC
30300211/30300212	TAP60-HE	60W/K	403x968x158mm	230VAC/48VDC
30300213/30300214	TAP90	90W/K	403x968x158mm	230VAC/48VDC
30300215/30300216	TAP90-HE	90W/K	403x968x158mm	230VAC/48VDC
30300217/30300218	TAP110	110W/K	465x1186x220mm	230VAC/48VDC
30300219/30300220	TAP110-HE	110W/K	465x1186x220mm	230VAC/48VDC
30300221/30300222	TAP120	120W/K	465x1186x220mm	230VAC/48VDC
30300223/30300224	TAP120-HE	120W/K	465x1186x220mm	230VAC/48VDC
30300225/30300227	TAP150	150W/K	650x1430x220mm	230VAC/48VDC
30300226/30300228	TAP150-HE	150W/K	650x1430x220mm	230VAC/48VDC
30300229/30300231	TAP200	200W/K	650x1430x220mm	230VAC/48VDC
30300230/30300232	TAP200-HE	200W/K	650x1430x220mm	230VAC/48VDC

ID.NO.	型号(完全外挂安装) Model(external hanging installation)	可用制冷量 Available cooling capacity	尺寸 WxHxD Size WxHxD	额定电压 Rated voltage
30300184/30300190	TAP60P	60W/K	403x968x158mm	230VAC/48VDC
30300197/30300203	TAP60P-HE	60W/K	403x968x158mm	230VAC/48VDC
30300185/30300191	TAP90P	90W/K	415x1130x145mm	230VAC/48VDC
30300198/30300204	TAP90P-HE	90W/K	415x1130x145mm	230VAC/48VDC
30300186/30300192	TAP110P	110W/K	467x1125x153mm	230VAC/48VDC
30300199/30300205	TAP110P-HE	110W/K	467x1125x153mm	230VAC/48VDC
30300187/30300193	TAP120P	120W/K	481x1151x207mm	230VAC/48VDC
30300200/30300206	TAP120P-HE	120W/K	481x1151x207mm	230VAC/48VDC



ID.NO.	型号(完全外挂安装) Model(external hanging installation)	可用制冷量 Available cooling capacity	尺寸 WxHxD Size WxHxD	额定电压 Rated voltage
30300188/30300194	TAP150P	150W/K	470x1290x130mm	230VAC/48VDC
30300201/30300207	TAP150P-HE	150W/K	470x1290x130mm	230VAC/48VDC
30300189/30300195	TAP200P	200W/K	655x1420x200mm	230VAC/48VDC
30300202/30300208	TAP200P-HE	200W/K	655x1420x200mm	230VAC/48VDC

顶装气/气热交换器 Top mounted air/air heat exchanger



性能特点 Features

- 采用板换式结构设计的TAP热交换器具有高效率的热交换能力；
- 能耗低，重量轻，外形美观大方；
- 完全独立的两个空气循环系统，确保控制柜内空气洁净；
- 结构精致，不会因为过冷而结霜，免维护；
- 可提供不同电压要求
- The TAP heat exchanger designed with plate structure which has high efficiency of heat exchange.
- Low energy consumption, light weight, beautiful appearance.
- Completely independent two air circulation systems to ensure the air cleanliness in the control cabinet.
- Fine structure, not frosting for too cold, maintenance free.
- Different voltage requirements can be provided.

ID.NO.	型号 Model	可用制冷量 Available cooling capacity	尺寸 WxHxD Size WxHxD	额定电压 Rated voltage
30300091/30300146	TAP50T	50W	600x420x250mm	230VAC/48VDC
30300057/30300060	TAP60T	60W	600x420x250mm	230VAC/48VDC
30300061/30300064	TAP90T	90W	600x480x280mm	230VAC/48VDC
30300065/30300068	TAP110T	110W	600x480x280mm	230VAC/48VDC
30300069/30300072	TAP120T	120W	600x480x300mm	230VAC/48VDC

壁装水/气热交换器 Wall mounted water / air heat exchanger



性能特点 Features

- 免维护，杜绝更换过滤网的烦恼；
- 需配备冷却水使用；
- 特别适用于极端环境条件下使用；
- 连接简单，安装方便；
- 管道全部采用铜部件；
- 紧凑式超薄设计，小尺寸大制冷量



性能特点 Features

- Avoid maintenance, eliminate the trouble of replacing the filter net.
- Need to be equipped with cooling water.
- It is especially suitable for use under extreme environmental conditions.
- Easy to be connected, easy to be installed.
- All pipes adopt copper parts.
- Compact ultra-thin design, small size and large refrigeration capacity.

ID.NO.	型号 Model	可用制冷量 Available cooling capacity	尺寸 WxHxD Size WxHxD	额定电压 Rated voltage
30400056	TAW1000	1000W	328x550x135mm	230 VAC /50Hz
30400058	TAW1500	1500W	328x550x135mm	230 VAC /50Hz
30400060	TAW2250	2250W	400x900x175mm	230 VAC /50Hz
30400062	TAW3000	3000W	400x900x175mm	230 VAC /50Hz
30400065	TAW5000	5000W	450x1300x250mm	230 VAC /50Hz
30400068	TAW7000	7000W	450x1300x250mm	230 VAC /50Hz

顶装水/气热交换器 Top mounted water / air heat exchanger



性能特点 Features

- 安全运行，来自于完美的冷凝水收集系统；
- 免维护，杜绝更换过滤网的烦恼；
- 空间紧凑场合仍能保持良好的冷却效果；
- 特别适用于极端的环境条件下使用；
- 使用价格低廉的水作为载冷剂获取更低的运行成本
- Safe operation, from the perfect condensate collectionsystem.
- Avoid maintenance, eliminate the trouble of replacing the filter net.
- It can keep good cooling effect in compact space.
- It is especially suitable for use under extreme environmental conditions.
- Operation cost of the coolant gets lower by using water.

ID.NO.	型号 Model	可用制冷量 Available cooling capacity	尺寸 WxHxD Size WxHxD	额定电压 Rated voltage
30400071	TAW1700T	1700W	547x280x404mm	230VAC/50Hz
30400073	TAW2250T	2250W	547x280x404mm	230VAC/50Hz
30400075	TAW3500T	3500W	600x400x400mm	230VAC/50Hz
30400092	TAW5000T	5000W	600x600x400mm	230VAC/50Hz
30400093	TAW7000T	7000W	600x600x400mm	230VAC/50Hz



板装水冷热交换器 Plate water cooling heat exchanger



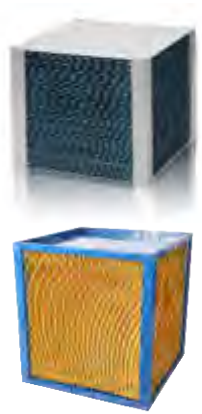
性能特点 Features

- 最直接的制冷方式，板式传导制冷，直接替换控制柜底板；
- 25mm的超薄尺寸，满足对空间有苛刻要求的场合；
- 无噪音，无冷凝水设计，让用户毫无后顾之忧；
- 模块化的设计满足不同环境的要求，选型更加简单；
- 特别适合于变频器密集安装场合；
- 机柜中的电气元件的节省空间的安装；
- 客户需冷却的电气设备，可选安装方式：直接在T型槽固定或通过螺纹钻孔固定

- The most direct cooling mode; Plate conduction refrigeration; Direct replacement of the bottom board of the control cabinet.
- The ultra-thin size of the 25mm to meet the harsh requirementsfor space.
- No noise, no condensation water design, so that the users have no worries.
- Modular design meets the requirements of differentenvironments, and model the selection is simpler.
- It is especially suitable for dense installation of frequency converter.
- The space saving of the electrical components in the cabinet.
- Electrical equipment that needs to be cooled by customers, optional installation: fixed directly in T grooves or fixed by threaded holes.

ID.NO.	型 号 Model	可用制冷量 Available cooling capacity	尺寸 WxHxD	适合柜体尺寸WxD
30400161	PAW2500	2500W	500x400x25mm	600x600mm
30400162	PAW3200	3200W	700x400x25mm	800x800mm
30400163	PAW5000	5000W	900x400x25mm	1000x1000mm
30400164	PAW7000	7000W	1100x400x25mm	1200x1000mm

P型热交换器核心 Air/air heat exchanger core



性能特点 Features

- 铝制或者环氧树脂涂层铝;
- 交叉型换热器采用纯铝或者环氧树脂涂层铝制成的波纹形金属板，以及同样高的传热系数;
- 交叉型换热器的特点是加强型构造，以应付1800帕的压差，这时压降变化幅度不会超出50%;
- 单程热交换可以提供60 - 70%的效率
- Aluminum or epoxy resin coated alumninum.
- The heat exchange core of cross-flow type adopts the ripple metal platemade of aluminum or epoxy resin coated alumninum at the parallel heat transmission coefficient.
- The heat exchange core of cross-flow type features its reinforced constructionto endure the extirme pressure difference up to 1800Pa and the change of pressure differencerange is not more than 50%.
- One-way heat exchange provides the efficiency 60~70%.

型 号 Model No.	尺寸Dimensions (WxHxD)			片距 Space between fins
	W	H	D	
HEX001	200mm	100-600mm	200mm	2.1/2.4/2.7
HEX002	300mm	100-600mm	300mm	1.8/2.2/3.0/4.0/5.0

逆流型热交换器核心 Counter Flow Heat Exchangers core



性能特点 Features

- 铝制或者环氧涂层;
- 逆流型换热器的特点是采用纯铝或环氧涂层铝制成得波纹形金属板。其表面形成得湍流可以促进热传递。湍流的增大不会造成污物滞留点和速度变化。这样就能充分利用整个热交换器，发挥其最佳性能;
- 逆流型热交换其可以根据客户的要求提供双L型流动，双U型流动，或L+U型流动结构
- Aluminum or epoxy resin coated alumninum ;
- The heat exchange core of counter-flow type adopts the ripple metal plate made of aluminum or epoxy resin coated alumninum which forms the turbulence to expedite the heat transmission. The increase on the turbulence will not produce any dirt stagnation point and speed change and thus make full use of the heat exchanger in its best performance ;
- The construction of dual L type, dual U type, or L+U type flow may be selected on request for counter-flow heat exchanger

型 号 Model No.	尺寸 WxHxD			片距 Space between fins
	W	H	D	
HEX400095	400mm	95mm	100-600mm	3.0/4.5/6.0
HEX500095	500mm	95mm	100-600mm	3.0/4.5/6.0
HEX400140	400mm	140mm	100-600mm	3.0/4.5/6.0
HEX500140	500mm	140mm	100-600mm	3.0/4.5/6.0
HEX600140	600mm	140mm	100-600mm	3.0/4.5/6.0
HEX500190	500mm	190mm	100-700mm	3.0/4.5/6.0/7.5
HEX600190	600mm	190mm	100-700mm	3.0/4.5/6.0/7.5
HEX700190	700mm	190mm	100-700mm	3.0/4.5/6.0/7.5
HEX800190	800mm	190mm	100-700mm	3.0/4.5/6.0/7.5
HEX600235	600mm	235mm	100-700mm	3.0/4.5/6.0/7.5
HEX700235	700mm	235mm	100-700mm	3.0/4.5/6.0/7.5
HEX800235	800mm	235mm	100-700mm	3.0/4.5/6.0/7.5
HEX900235	900mm	235mm	100-700mm	3.0/4.5/6.0/7.5
HEX1000235	1000mm	235mm	100-700mm	3.0/4.5/6.0/7.5



3 除湿系列 DH (Dehumidifier)

工业电气柜除湿机利用空气中水分遇冷凝露的原理，通过风机的作用让柜内的空气不断流过除湿机的冷端，使柜内空气的水分不断析出，减少柜内空气的绝对湿度。除湿机同时可以加热柜内除湿后的空气，提高柜内的空气饱和度，减少柜内的相对湿度。保证控制柜内部有理想的温度和湿度，从而保护控制柜内的电气元件在可控的范围内运行。

The industrial electric cabinet dehumidifier makes use of the principle of cold condensation of water in the air. Through the action of the fan, the air in the cabinet keeps flowing through the cold end of the dehumidifier, so that the moisture of the air in the cabinet is continuously precipitated, and the absolute humidity of the air in the cabinet is reduced. The dehumidifier can also heat the air after dehumidification in the cabinet, improve the air saturation in the cabinet, and reduce the relative humidity in the cabinet. To ensure the ideal temperature and humidity inside the control cabinet, to protect the electrical components in the control cabinet to operate within a controllable range.



半导体除湿机 Semiconductor dehumidifier



- 性能特点 Features
- 安装方便，可利用DIN导轨快速安装和螺钉紧固安装；
 - 冷凝除湿，根本上解决了柜内湿度过高，电气器件出现冷凝水的隐患；
 - 结构紧凑，柜内使用，不占用过多的柜内空间；
 - 半导体制冷除湿，无振动、噪音小、可靠性强，可连续长时间运行；
 - 预设控制程序，自动运行，使电柜环境始终保持在理想状态
 - Easy installation, rapid installation of DIN guide rail and screw fastening installation.
 - Condensate dehumidification, it has fundamentally solved the high humidity in the cabinet and the hidden danger of condensate in electrical devices.
 - It is compact, used in the cabinet and does not occupy too much space in the cabinet.
 - Semiconductor refrigeration dehumidification, no vibration, small noise, strong reliability, it can run for a long time.
 - The presupposition control program runs automatically to keep the cabinet environment in an ideal state.

ID.NO.	型号(完全外挂安装) Model(external hanging installation)	除湿量 Dehumidification	尺寸 WxHxD Size WxHxD	额定电压 Rated voltage
31000003	TEH30	210mL/D	125x214x80mm	230 VAC/50Hz
31000002	TEH40	280mL/D	125x214x80mm	230 VAC/50Hz
31000001	TEH60	410mL/D	125x214x80mm	230 VAC/50Hz
31000004	TEH100	510mL/D	150x124.8x245mm	230 VAC/50Hz
31000005	TEH200	1000mL/D	150x124.8x245mm	230 VAC/50Hz
30200859	TEH400	2500mL/D	150x124.8x245mm	230 VAC/50Hz

工业除湿机 Semiconductor dehumidifier



- 性能特点 Features
- 设计除湿量3L/D,高效除湿;
 - 自带加热功能;
 - 半内嵌安装，占用空间小;
 - 仅4个螺栓安装，安装方便;
 - 数字化的控制面板，3键简单操作;
 - 可实时显示柜内温度、湿度
 - Designed dehumidification capacity 3L/D, efficient dehumidification;
 - Self-heating function;
 - Semi-embedded installation, occupying less space;
 - Only 4 bolts are installed, easy to install;
 - Digital control panel, 3 keys simple operation;
 - Real-time display of temperature and humidity in cabinet.

ID.NO.	型号 Model	耗电功率 Power Consumption	尺寸 WxHxD Size WxHxD	额定电压 Rated voltage
30200824	HD3000	240W	270x550x160mm	230 VAC/50Hz
31000006	HD3000-I	240W	270x550x160mm	230 VAC/50Hz
30200903	HD3000-P	240W	270x550x160mm	230 VAC/50Hz
30200696	HD8000	370W	389x954x225mm	230 VAC/50Hz



4 通风系列 EV (Enclosure Ventilation)

雷子克自主研发的过滤风扇可满足电力、饮料等行业控制柜的通风散热的需求。该产品采用风水两独立通道、R800圆弧、卡扣式安装等人性化结构设计，不仅外形美观，而且减小风阻，提供更大的风量，从而提高了散热效率。同时该产品采用了多种材料、新元件和高新技术，经过精心的研发和设计改良，具有技术先进、品质优良、使用安全、能耗低、寿命持久、清洁保养方便等一系列优点，已逐步成为各地区畅销产品。

Leizig developed filter fan can meet the ventilation control cabinet, power and beverage industry demand. This product uses two independent wind and water channels, R800 arc, buckle type installation and other humanized structure design. It not only has beautiful appearance, but also reduces windage resistance, and provides larger air volume. Improved the heat dissipation efficiency. At the same time, the product using a variety of materials, new elements, new and high technology. After careful research and design improvement, the product has a series of advantages of advanced technology, excellent quality, safe use, low energy consumption, long service life, convenient cleaning and maintenance, and has gradually become the best-selling products in different regions



壁装过滤风扇 Wall-mounted filter fan

NEW



- 性能特点 Features
- 适合各类型发热柜体，结构紧凑，设计合理，低噪音运作；

■ 结构紧凑，设计合理，低噪音运作；

■ 拥有高效的稳定性，连续使用时间更长能适应在；

■ 通风栅格独特设计，防止杂物及水汽的侵入；

■ 外加防喷水外壳，防护等级IP54可提高到IP56；

■ 安装简便，不需螺钉，直接卡入即可，凹入的手把，更方便更换过滤垫

■ Suitable for all types of heating cabinets, compact structure, reasonable design, low noise operation;

■ With high stability and longer time

■ The unique design of the ventilation grid to prevent the invasion of debris and water vapor.

■ External water proof shell. The protection grade IP54 can be increased to IP56

■ The installation is simple, without screws, direct card in, more convenient to replace the filter pad.

ID.NO.	型 号 Model	空气流量(m³/h) Air flow (m³/h)	开孔尺寸WxL(mm) Hole size WxL(mm)	额定电压 Rated voltage	IP等级 IP rating
32100002/32101002	R92-230	20 / 25	92x92	230 VAC /50/60Hz	IP54/IP55
32100003/32101003	R92-115	20 / 25	92x92	115 VAC /50/60Hz	IP54/IP55
32100001/32101001	R92-024	25	92x92	24VDC	IP54/IP55
32100004/32101004	R92-048	25	92x92	48VDC	IP54/IP55
32100007/32101007	R124-230	55 / 70	124x124	230 VAC /50/60Hz	IP54/IP55
32100008/32101008	R124-115	55 / 70	124x124	115 VAC /50/60Hz	IP54/IP55
32100006/32101006	R124-024	55	124x124	24VDC	IP54/IP55
32100009/32101009	R124-048	55	124x124	48VDC	IP54/IP55
32100012/32101012	R177-230	105 / 120	177x177	230 VAC /50/60Hz	IP54/IP55
32100013/32101013	R177-115	105 / 120	177x177	115 VAC /50/60Hz	IP54/IP55
32100011/32101011	R177-024	105	177x177	24VDC	IP54/IP55
32100014/32101014	R177-048	105	177x177	48VDC	IP54/IP55
32100017/32101017	R224-230	365 / 390	224x224	230 VAC/50/60Hz	IP54/IP55
33100003/33100004	R224D-230	187 / 217	224x224	230 VAC/50/60Hz	IP54/IP55
33100001/33100002	R292D-230	528/588	292x292	230 VAC/50/60Hz	IP54/IP55
33100063	R292E-230	750/800	292x292	230 VAC/50/60Hz	IP54/IP55
32100021/32101021	R292-230	900/985	292x292	230 VAC/50/60Hz	IP54/IP55
32100062	R292F-230	900/985	292x292	230 VAC/50/60Hz	IP54/IP55

提示：如有不锈钢过滤垫供货在相应的型号后加-H。



顶装过滤风扇/顶装风扇灯 Top-mounted filter fan /Top-mounted fan lamp



- 性能特点 Features
- 顶部挡风外壳设计，能防止上面杂物的侵入；
 - 热空气有向上的特征，顶装风扇就为此特征而特定设计，可高效排出热空气；
 - 顶装风扇灯和控制柜的照明系统的完美组合，散热照明一体化；
 - 一个产品的简易安装带来的是两种产品的散热和照明的功效；
 - 雷子克突破性的创新让电气柜的环境控制日臻完美
- The top wind shield is designed to prevent the invasion of the above sundries.
- The hot air has an upward feature, and the top fan is designed for this feature, which can efficiently discharge the hot air.
- The perfect combination of the lighting system and the top-mounted fan make the integration of heat dissipation and lighting
- The simple installation of a product is ushered in the effectiveness of the heat dissipation and lighting of the two products.
- Leizig innovation breakthrough make electrical cabinet environmental control perfect.

ID.NO.	型 号 Model	空气流量(m³/h) Air flow (m³/h)	开孔尺寸WxL(mm) Hole size WxL(mm)	额定电压 Rated voltage
30100086	RT224-230	260 / 300	224x224	230 VAC /50/60Hz
30100134	RL224-230	260 / 300	224x224	230 VAC /50/60Hz
30100090	RT292-230	540 / 600	292x292	230 VAC /50/60Hz
30100138	RL292-230	540 / 600	292x292	230 VAC /50/60Hz
30100094	RT292F-230	1100 /1250	292x292	230 VAC /50/60Hz
30100142	RL292F-230	1100 /1250	292x292	230 VAC /50/60Hz

顶装超薄风扇 Top-mounted super thin fan



- 性能特点 Features
- 超薄外型设计，能最大限度节省你宝贵的空间；
 - 高风量排放，抽热更高效
- Ultra-thin outer design can save your precious space to the maximum.
- High wind discharge, heat pumping more efficient.

顶装超薄风扇 Top-mounted super thin fan



- 性能特点 Features
- 顶部挡风外壳设计，能防止上面杂物的侵入；
 - 热空气有向上的特征，顶装风扇就为此特征而特定设计，可高效排出热空气
- The top wind shield is designed to prevent the invasion of the above sundries.
- The hot air has an upward feature, and the top fan is designed for this feature, which can efficiently discharge the hot air.

ID.NO.	型 号 Model	空气流量(m³/h) Air flow (m³/h)	开孔尺寸WxL(mm) Hole size WxL(mm)	额定电压 Rated voltage
30100083	RT420-230	2550/2850	420x450	230 VAC/50/60Hz
30100084	RT420-115	2850	420x450	115 VAC/60Hz

19``架装轴流风扇 9``Shelf-mounted axial fan RM320



- 性能特点 Features
- 1U的小尺寸设计，低噪音，随意安装在482.6mm(19``)平面上；
 - 可以配合前排气出口过滤器使用达到对流效果
- 1U's small size design, low noise, installed randomly on the 482.6MM (19``) plane.
- It can be used with the front exhaust outlet filter to achieve the convective effect.

ID.NO.	型 号 Model	空气流量(m³/h) Air flow (m³/h)	高度 High	额定电压 Rated voltage
30100160	RM320-230	320	1U	230 VAC/50/60Hz
30100161	RM320-115	320	1U	115 VAC/60Hz
30100159	RM320-024	320	1U	24 VDC
30100162	RM320-048	320	1U	48 VDC
30100164	RM480-230	480	1U	230 VAC/50/60Hz
30100165	RM480-115	480	1U	115 VAC/60Hz
30100163	RM480-024	480	1U	24 VDC
30100166	RM480-048	480	1U	48 VDC

19``架装横流风扇 19`` Shelf-mounted axial fan

性能特点 Features

- 通过吸取和过滤柜外空气强有力地冷却机柜的热元件；
- 不同其它类型的风扇，加装横流风机提供高压的空气流；
- 2U小尺寸设计，低噪音，随意安装在482.6（19``）平面上；
- 可以配合前排气出口过滤器使用达到对流效果
- The cooling of the thermal element in the cabinet by absorbing and filtering the air outside the cabinet.
- Different with other type fans, adding a cross flow fan to providehigh pressure air flow.
- 2U small size design, low noise, installed randomly on the 482.6 (19``) plane.
- It can be used with the front exhaust outlet filter to achieve the convective effect.

ID.NO.	型 号 Model	空气流量(m³/h) Air flow (m³/h)	高度 High	额定电压 Rated voltage
30100176	RM330-230	330	2U	230 VAC 50/60Hz
30100177	RM330-115	330	2U	115 VAC/60Hz
30100179	RM330-000	出口过滤器	-	-

内循环热点风扇 Inner loop hot fan



性能特点 Features

- 避免工业电气柜元件热积累，支持激活其它电气柜环境控制产品；从而确保控制柜内的主要发热元件在可按的温度范围内运行；
- 两个轴向的灵活控制，安装后无级调整风向，确保柜内热均匀
- Avoid thermal accumulation of components in industrial electrical cabinet, support ctivation of other electric cabinet environmental control products, so as to ensure that the main heating elements in the control cabinet can operate within a temperature range.
- Two axial flexibly control. After installation, the wind direction is adjusted stepless to ensure the heat uniformity in the cabinet.

ID.NO.	型 号 Model	空气流量(m³/h) Air flow (m³/h)	额定电压 Rated voltage
30100497	RP92-230	80	230VAC/50/60Hz
30100498	RP92-115	80	115VAC/60Hz
30100499	RP92-024	80	24VDC
30100321	RP124-230	160	230VAC/50/60Hz
30100322	RP124-115	160	115VAC/60Hz
30100320	RP124-024	160	24VDC

AC 后向离心风机 AC backward centrifugal fan



性能特点 Features

- 叶轮材质：玻纤增强塑料PA66+25GF
- 电机类型：AC外转子感应电机
- 绝缘等级：F级
- 保护：具有可恢复性热保护功能
- 电机防护等级：IP42-44
- 产品符合的认证：CE、CCC
- 工作温度：-30 ~ +60℃
- Impeller material: glass fiber reinforced plastic PA66+25GF;
- Motor type: AC outer rotor induction motor
- Insulation class: Class F
- Protection: with recoverable thermal protection function
- Motor protection class: Ip42-44
- Product certification: CE, CCC
- Working temperature: -30 ~ +60℃

ID.NO.	产品型号 PRODUCT NUMBER	轴承类型 BEARING TYPE	额定电压 RATED VOLTAGE	频率 FREQUENCY	电容 CAPACITANCE	额定转速 RATED SPEED	额定风量 RATED AIR VOLUME	额定电流 RATED CURRENT	额定功率 RATED POWER
30100386	CF133	BALL	220-240	50/60	1	2650/2900	200/240	0.12/0.13	25/29
30100389	CF175	BALL	220-240	50/60	1	2650/2900	200/240	0.12/0.13	25/29
30100392	CF190	BALL	220-240	50/60	2	2450	550	0.27	60
30100396	CF220	BALL	230	50/60	3	2450/2640	900/950	0.37/0.51	82/112
30100399	CF225	BALL	220-240	50	4	2600	1150	0.57	135
30100402	CF250	BALL	220-240	50	5	2640	1300	0.67	150
30100405	CF250	BALL	220-240	50	3	1390	820	0.36	78

通风系列--增值功能
Ventilation series -- Value-added function



EMC电磁屏蔽 RXXX-EMC
EMC electromagnetic shielding

- 通过增加EMC防护罩或者导电涂料，从而确保我们的过滤风扇和机柜金属表面有效导通来防电磁干扰。
- 带EMC防护功能：300MHz无影响；300MHz~1GHz小于10dB.
- By adding a EMC shield or conductive coating, it ensures that the metal surface of our filter fan and the cabinet can be effectively guided to prevent electromagnetic interference.
- With EMC protection: 300MHz has no effect; 300MHz~1GHz is less than 10dB.



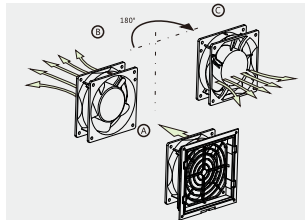
温度监控 RXXX-TC
Temperature monitoring

- 通过增加温控开关元件，从而使我们的过滤风扇根据环境温度的变化达到自动启停的目的。
- 温控开关（35℃常开）：当环境温度大于35℃时，温控开关闭合，启动过滤风扇；当环境温度小于35℃时，温控开关断开，过滤风扇停止运转。
- 温控开关精度为±5℃.
- By adding the temperature control switch element, our filter fan is automatically started and stopped according to the change of the ambient temperature.
- Temperature control switch (35℃constant open) : When the ambient temperature is greater than 35℃, the temperature control switch is closed, and the filter fan is started. When the ambient temperature is less than 35℃, the temperature control switch is switched off, and the filter fan stops running.
- The precision of the temperature control switch is±5℃.



风速监控 RXXX-RC
wind speed monitoring

- 通过增加风感开关元件，从而使我们的过滤风扇根据风速的变化达到自动启停的目的。
- 风速开关切换值 > 2.5m/s；最大风速50m/s.
- By adding the wind sensing switch element, our filter fan is automatically started and stopped based on the change of wind speed.
- The switching value of wind speed switch > 2.5m/s; maximum wind speed 50m/s.



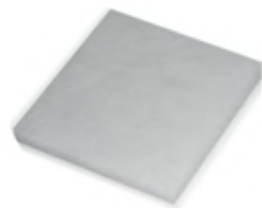
向外吹风 RXXX-O
Blow outward

- 向外吹风：通过将风机旋转180°C安装或者更换风机，从而使我们的过滤风扇根据客户应用的需求，达到向外排风的目的。
- Blow outward : By rotating the fan at 180 degrees or replacing the fan, our filter fan is designed to meet the demand of customer application and to achieve the external exhaust.



出口过滤器 RXXX-000
Outlet filter

- 为了通过对流进行通风，可在机柜的上面和上面分别安装一个出口过滤器；
- 出口过滤器可配套过滤风扇同时使用，过滤性能与风扇相同。
- To ventilate through convection, an outlet filter can be installed above and below the cabinet.
- The outlet filter can be used simultaneously with the filter fan, and the filter performance is the same as that of the fan.



纤维过滤垫 RXXX-700

- 多层结构的无纺纤维，耐高温可达100度，阻燃性可达HF-2级；
- 含尘空气进入的一侧为开发型结构，清洁空气一侧为封闭型结构；
- 阻挡所有10微米以上的灰尘颗粒。
- Multi structure non-woven fiber, the temperature resistance can reach 100℃and the flame retardancy can reach HF-2 grade.
- The dust air enters the open structure side, the clean air side is a closed structure.
- All dust particles above all 10 microns are blocked.



波纹过滤垫 RXXX-700G

- 波纹形状的过滤垫，能更高效的过滤空气，使过滤效率和过滤等级得以提升；
- 阻挡所有10微米以上的灰尘颗粒，并能有效的阻挡水分子的侵入。
- The corrugated filter pad can filter the air more efficiently. Improv filtering efficiency and filtering grade.
- Block all dust particles above 10 microns and effectively block the invasion of water molecules.



金属过滤垫 RXXX-700H

- 在含尘和含油的环境中使用这种可方便清洗的过滤垫,在金属表面出现空气或蒸汽冷凝时，不时会有污物颗粒粘留在金属表面上，可以用水或除油腻的清洗剂很容易地洗去。
- In the dust and oil environment, the filter pad is convenient for cleaning. In the air or steam condensation occurs on the metal surface, there will be sticky dirt particles in the metal surface sometimes. We can use water or cleaning agent for oily easily wash away.



防喷水外壳 RXXX-800

- 使用防喷水外壳把电气柜的IP等级提高到IP56；
- 特别适用于食品加工行业
- Use the anti-spray shell to raise the IP grade of the electric cabinet to IP56.
- It is especially suitable for the food processing industry.



加热系列 CH (Cabinet Heater)

- 外观新颖，结构紧凑，多方位，多方式安装；
- 防止电气柜冷凝结霜，占有空间小，且能保持有效的加热；
- 多种接线方式，可美观PTC和风机的单独控制；
- 自带温控和过热保护功能，达到精确的温度控制；
- 可选风控功能，实时监控风扇运行状态。
- New appearance, compact structure, multiaspect and multi way installation.
- Prevent the condensing and frosting of the electric cabinet. It has small space and can keep effective heating.
- Multiple connection mode, the solo control of the PTC and the fan.
- With the function of temperature control and overheating protection to achieve accurate temperature control.
- Optional wind control function to monitor fan running in real time.



屏柜加热器 Cabinet heater



- 性能特点 Features
- 防止电气柜冷凝潮湿和结霜；
- 在占有空间最小的情况下保持有效的加热；
- 表面温度受PTC元件控制，绝不因误动作而伤害人体；
- DIN导轨快速安装；
- 可配合TH/MT(温度控制器)而达到精确的温度控制
- Prevent the electric cabinet from condensing and frosting.
- Keep effective heating in the case of minimum occupancy.
- The surface temperature is controlled by the PTC element, and it will never hurt the human body by mis-operation.
- DIN guide rail installion.
- Accurate temperature control can be achieved with TH/MT (temperature controller).

ID.NO.	型号 Model	热输出 Cabinet heater	尺寸 WxHxD Size WxHxD	额定电压 Rated voltage
30600001	H15	15W	70x109x50mm	230VAC/50Hz
30600002	H30	30W	70x109x50mm	230VAC/50Hz
30600003	H45	45W	70x109x50mm	230VAC/50Hz
30600004	H60	60W	70x184x50mm	230VAC/50Hz
30600005	H75	75W	70x184x50mm	230VAC/50Hz
30600006	H100	100W	70x184x50mm	230VAC/50Hz
30600007	H150	150W	70x264x50mm	230VAC/50Hz

屏柜加热器(侧面/底部安装) Cabinet heater(side / bottom installation)



- 性能特点 Features
- 防止电气柜或特定区域的冷凝潮湿和结霜；
- 发热元件为PTC半导体热敏电阻，具有恒温、自保护、寿命长等特点；
- 可配合MT（温度控制器）而达到精确的温度控制；
- 安装方式：导轨安装和螺钉安装
- Preventing condensation, dampness and frost in electrical cabinets or specific areas ;
- The heating unit is PTC semiconductor thermistor, which has the characteristics of constant temperature, self-protection and long service life ;
- Accurate temperature control can be achieved with MT (temperature controller) ;
- Installation mode: guide rail installation and screw installation

ID.NO.	型号 Model	热输出 Cabinet heater	尺寸 WxHxD Size WxHxD	额定电压 Rated voltage
32600019	H200	200W	63x93x63mm	230VAC/50Hz
32600020	H400	400W	63x93x63mm	230VAC/50Hz
32600023	H600	600W	96x150x96mm	230VAC/50Hz
32600024	H800	800W	96x150x96mm	230VAC/50Hz
32600025	H1000	1000W	96x150x96mm	230VAC/50Hz
32600026	H1200	1200W	96x150x96mm	230VAC/50Hz

屏柜加热器 Cabinet heater



性能特点 Features

- 防止电气柜或特定区域的冷凝潮湿和结霜；
- 发热元件为PTC半导体热敏电阻，具有恒温、自保护、寿命长等特点；
- 同时受过热保护开关保护，保护温度为120℃；
- 可配合MT（温度控制器）而达到精确的温度控制；
- 安装方式：螺钉固定
- Prevent the electric cabinet from condensing and frosting.
- The heating element is PTC semiconductor thermistor with the characteristics of constant temperature, self-protection, long life and so on.
- At the same time, it is protected by overheating protection switch, and the protection temperature is 120℃.
- Accurate temperature control can be achieved with MT (temperature controller).
- Method of installation: screw fixation

ID.NO.	型号 Model	热输出 Cabinet heater	尺寸 WxHxD Size WxHxD	额定电压 Rated voltage
30600141	H1600	1600W	200x250x130mm	230VAC/50Hz
30600140	H2000	2000W	200x250x130mm	230VAC/50Hz

机舱加热器 Engine room heater



性能特点 Features

- 防止机舱或特定区域的冷凝潮湿和结霜；
- 超温保护功能，确保设备安全运行；
- 多种安装方式；
- 自带风机延时工作有助完全散热；
- 可配合MT(温度控制器)而达到精确的温度控制
- Prevent condensation, moisture and frost in engine room or specific area.
- Overtemperature protection function to ensure the safe operation of the equipment.
- Multiple installation methods
- Delayed work of air blower helps complete heat dissipation
- Accurate temperature control can be achieved with MT (temperature controller).

ID.NO.	型号 Model	热输出 Cabinet heater	尺寸 WxHxD Size WxHxD	额定电压 Rated voltage
30600080/30600047	H5000	5000W	305x431x280mm	AC400V/AC690V
30600050/30600057	H10000	10000W	305x431x280mm	AC400V/AC690V
30600081/30600077	H15000	15000W	305x431x280mm	AC400V/AC690V

增值功能的选择 Choice of value-added function:

RC

- 气流传感器（NC/NO），监控风机状态.它简单的机械操作可反馈一个报警信号给远程控制的电子监控系统.
- The air flow sensor (NC/NO) monitors the state of the fan. Its simple mechanical operation can feed back an alarm signal to a remote control electronic monitoring system.





照明&环境控制系统

(Enclosure Lighting & Monitoring)

EL照明灯 EL Floodlight

- 自带限位开关（可选），只需简单的调节就可以实现门关即灭，门开即亮；
- 不再需要用螺丝拧灯罩，不需要繁琐的联接，因为通过接插式简单的一插即合；
- 没有刺眼的强光，因为采用弧光栅，使电柜更加柔和，舒适；
- 根据客户需求，可屏蔽限位开关的功能，设计更改周到；
- 备用电源插座适用于各国标准；
- 适用于宽度600-1200mm标准柜；
- 多种附加功能可供选择：限位开关功能、人体感应开关等。
- With limit switch (optional), the door is closed,then the light goes out. And the door opens,the light on.
- NO longer need to screw the lampshade,without the need for tedious connection,because the plug can be simple piugged.
- There is no bright light,because the arc grating is used to make the cabonet more soft and comfortable.
- According to customers needs,the function of the limit switch can be shielded,and the design changes are thoughtful.
- Standby power sockets are app;ocable to all kinds of national standards.
- Suitable for width 600-1200mm standard cabinet.
- A variety of additional functions are available:limit switch function,human induction switch,etc.



MT控制器

- 特别适用于控制过滤器风扇、加热器和热交换器，也可以作为信号发生器用于监视控制柜内温度；
- 可应用的电压范围大，一个型号就可适用于24V到230V；可灵活的安装在符合35mm宽的水平支撑导轨上，也可以使用附带的适配卡装到机柜的型材上。
- It is especially suitable for the control of the filter fan,heater and heat exchanger, and can also be used as a signal generator to monitor the temperature in the control cabinet.
- The applicable voltage range is large,and one model can be applied to 24Vto 230V.it can be installed on the horizontal supporting rail that meets 35mm width,and can also be attached to the cabinet with the attached adapter card.



控制柜照明系统 Control cabinet lighting system

性能特点 Features

- 限位开关(可选)，只需简单的调节就可以实现门关即灭，门开即亮；
- 不再需要用螺丝拧灯罩，不需要繁琐的联接，因为通过接插式简单的一插即合；
- 没有刺眼的强光，因为采用弧光栅，使电柜更柔和，舒适；
- 可屏蔽限位开关的功能，设计更为周到；
- 适用于宽度不小于600mm-800mm标准柜
- limited switch (optional), the door is closed, then the light goes out. And the door opens, the light on.
- No longer need to screw the lampshade, without the need for tedious connection, because the plug can be simple plugged.
- There is no bright light, because the arc grating is used to make the cabinet more soft and comfortable.
- According to customers' needs, the function of the limit switch can be shielded, and the design changes are thoughtful.
- It is applicable to the standard cabinet with no less than 600-800 mm width.



ID.NO.	型号(含限位开关) Model(With a limited switch)	功 率 power	尺寸 WxHxD Size WxHxD	额定电压 Rated voltage
30700288	EL14-230	6W	430x117.3x54.6mm	230 VAC
30700298	EL14-024	6W	430x117.3x54.6mm	24 VDC
30700226	EL18-230	8W	690x117.3x54.6mm	230 VAC
30700227	EL18-115	8W	690x117.3x54.6mm	115 VAC
30700228	EL18-024	8W	690x117.3x54.6mm	24 VDC
30700229	EL18-048	8W	690x117.3x54.6mm	48 VDC

ID.NO.	型号(不含限位开关) Model(Without limit switch)	功 率 power	尺寸 WxHxD Size WxHxD	额定电压 Rated voltage
30700289	EL14D-230	6W	430x117.3x54.6mm	230 VAC
30700015	EL14D-024	6W	430x117.3x54.6mm	24 VDC
30700238	EL18D-230	8W	690x117.3x54.6mm	230 VAC
30700239	EL18D-115	8W	690x117.3x54.6mm	115 VAC
30700240	EL18D-024	8W	690x117.3x54.6mm	24 VDC
30700241	EL18D-048	8W	690x117.3x54.6mm	48 VDC



简易照明灯 Simple light



性能特点 Features

- 自带限位开关，只需简单的调节就可以实现门关即灭，门开即亮；
- 不再需要用螺丝拧灯罩，不需要繁琐的联接，因为通过接插式简单的一插即合；
- 没有刺眼的强光，因为采用弧光栅，使电柜更柔和，舒适；
- 可屏蔽限位开关的功能，设计更为周到；
- With a limited switch (optional), the door is closed, then the light goes out. And the door opens, the light on.
- No longer need to screw the lampshade, without the need for tedious connection, because the plug can be simple plugged.
- There is no bright light, because the arc grating is used to make the cabinet more soft and comfortable.
- According to customers' needs, the function of the limit switch can be shielded, and the design changes are thoughtful.

ID.NO.	型号 Model	功 率 power	尺寸 WxHxD Size WxHxD	额定电压 Rated voltage
30700193	ELE8	14W	200x87x52mm	230 VAC
30700199	ELE8D	14W	200x87x52mm	24 VDC
30700194	ELE12	14W	200x87x52mm	230 VAC
30700200	ELE12D	14W	200x87x52mm	115 VAC

照明系列--附件
Enclosure Lighting Series--Accessories

名称: 供电接线 型号: EL100 ID.NO.30700283
Name: power supply connection:EL100 ID.NO.30700283



图片仅供参考,按实物为准

- 额定电压：300/500V,额定温度：70℃；
- 导体使用3×0.75mm²的铜芯导线，长度为3米；
- PVC绝缘；PVC护套；
- 可通过DIN VDE HD 405.1垂直耐燃试验；
- 使用标准厚度、易剥、易裁；
- 具有抗酸碱、耐油、防潮、防霉、环保等特性；
- 供电接线一端接欧标母插头，一端接欧标插针
- Rated voltage: 300/500V, rated temperature: 70°C.
- The conductor uses a copper core wire of 3 x 0.75mm², with a length of 3 meters.
- PVC insulation; PVC sheath
- Through DIN VDE HD 405.1 vertical combustion test.
- Use of standard thickness, easily stripped and easy to cut.
- It has the characteristics of anti-acid alkali, oil resistance, moisture proof, mildew proof, environmental protection and so on.
- One end of the power supply connection is connected with the European standard plug, and one end is connected with a European standard pin.



图片仅供参考,按实物为准

名称: 转接线 型号: EL400 ID.NO.30700287
Name: transfer connection:EL400 ID.NO.30700287

- 额定电压：300/500V,额定温度：70℃；
- 导体使用3×0.75mm²的铜芯导线，长度为1米、2米、3米；
- PVC绝缘；PVC护套；
- 可通过DIN VDE HD 405.1垂直耐燃试验；
- 使用标准厚度、易剥、易裁；
- 具有抗酸碱、耐油、防潮、防霉、环保等特性；
- 转接线一端接欧标母插头，一端接欧标公插头
- Rated voltage: 300/500V, rated temperature: 70°C.
- The conductor uses a copper core wire of 3 x 0.75mm², with a length of 1,2,3 meters.
- PVC insulation; PVC sheath
- Through DIN VDE HD 405.1 vertical combustion test.
- Use of standard thickness, easily stripped and easy to cut.
- It has the characteristics of anti-acid alkali, oil resistance, moisture proof, mildew proof, environmental protection and so on.
- One end of the connecting line is connected with the European standard plug, and one end is connected with a European standard pin.



图片仅供参考,按实物为准

名称: 限位开关 型号: LS05 ID.NO.30700285
Name: limit switch:LS05 ID.NO.30700285

- 该产品取得EN60947标准认证；
- 易于维修，油封隔离及耐冲击之安全行程开关；
- 采用热塑性强力之复合材料及高强度合金组成；
- 电气接点采用Ag-Ni合金加以黄金镀膜；
- 取得CCC、CE、IEC947-5-1，VDE、FI之工业电气安全规格认证；
- 工作温度范围广(-20℃至+60℃).防护等级为IP65；
- 机械寿命为1000万次以上，电气寿命为50万次以上；
- 导体使用2×0.75mm²的铜芯导线，长度为1米
- The product has been certified by EN60947 standard.
- Easy to repair, oil seal isolation and shock resistant safety stroke switch.
- Composition of thermoplastic strength composite and high strength alloy.
- Ag-Ni alloy and gold coating are used for electrical contact.
- Obtain industrial electrical safety specification certification of CCC, CE, IEC947-5-1, VDE and FI.
- The working temperature range is wide (-20°Cto +60°C). The protection grade is IP65.
- The mechanical life is more than 10 million times, and the electrical life is over 500 thousand times.
- The conductor uses a copper core wire of 2 x 0.75mm², with a length of 1 meters.

名称: LED灯管 Name: LED lamp

序列号 Factory ID No.	功率 power	额定电压 Rated voltage
30700246	6W	AC 110~240 V
30700247	6W	DC 24 V-48V
30700248	6W	DC 48 V
30700249	8W	AC 110~240 V
30700250	8W	DC 24 V-48V
30700251	8W	DC 48 V



图片仅供参考,按实物为准

温度控制器(机械式) Temperature controller (Mechanical)



性能特点 Features

- 温控器（常开）：常用于监控过滤风扇或热交换器，当温度超过设定数值时闭合电路输出信号；
- 温控器（常闭）：常用于连接加热器，当温度达到设定数值时断开线路；
- 小尺寸，大设定范围；
- 简易安装，高切换性能
- Temperature controller (constant open): often used to monitor the filter fan or heat exchanger. When the temperature exceeds the set value, the closed-circuit output signal.
- Temperature controller (constant closed): used to connect heater. When the temperature reaches the set value, off the line.
- Small size, large set range.
- Simple installation and high switching performance.

ID.NO.	型号 Model	描述 describe	尺寸 WxHxD Size WxHxD	控制范围 Control range
30600013	MT01	温度控制器（常开） Temperature controller (normally open)	33x60x42mm	0°C-60°C
30600014	MT10	温度控制器（常闭） Temperature controller (normally closed)	33x60x42mm	0°C-60°C

温度控制器(机械式) Temperature controller (Mechanical)



性能特点 Features

- 一个温控器含两个温度设定；
- 常开触点：常用于监控过滤风扇，热交换器或当温度超过设定数值时闭合电路输出信号；
- 常闭触点：常用于连接加热器，当温度达到设定数值时断开线路；
- 加热器和制冷设备可分别独立切换，避免传统切换引起的温度偏差；
- 大温度设定范围；
- NO和NC整合在一起，独立设定温度；
- 简易安装，高切换性能
- A temperature controller contains two temperature settings.
- Constant open contact: often used to monitor the filter fan or heat exchanger. When the temperature exceeds the set value, the closed-circuit output signal.
- Constant closed contact :used to connect heater. When the temperature reaches the set value, off the line.
- The heater and the refrigeration equipment can be switched separately to avoid the temperature deviation caused by the traditional switching.
- Large range temperature setting.
- NO and NC are integrated to set the temperature independently.
- Simple installation and high switching performance.

ID.NO.	型号 Model	描述 describe	尺寸 WxHxD Size WxHxD	控制范围 Control range
30600015	MT11	温度控制器（常开/常闭） Temperature controller (normally open/normally closed)	50x67x46mm	0°C~60°C

湿度控制器(机械式) Temperature controller (Mechanical)



性能特点 Features

- 湿度控制器（常开）：常用于连接加热器，当湿度超过设定数值时闭合电路输出信号；
- 湿度控制器（常闭）：常用于连接过滤风扇，当湿度达到设定数值时断开电路；
- 小尺寸，大设定范围；
- 简易安装，高切换性能
- Humidity controller (constant open): often used to connect heater, when the humidity exceeds the set value, the closed-circuit output signal.
- Humidity controller (constant closed): often used to connect fan, when the humidity exceeds the set value, off the line.
- Small size, large set range.
- Simple installation and high switching performance

ID.NO.	型号 Model	描述 describe	尺寸 WxHxD Size WxHxD	控制范围 Control range
30600016	MY11	湿度控制器（常开/常闭） Humidity controller (normally open/normally closed)	50x67x38mm	35%~95%

温度控制器(热胀型) Temperature controller (thermal expansion type)



性能特点 Features

- 温控器（常开）：常用于连接降温负载，当温度超过设定数值时闭合电路输出信号；
- 温控器（常闭）：常用于连接升温负载，当温度达到设定数值时断开线路；
- 小尺寸，大设定范围；
- 简易安装，高切换性能
- Temperature controller (constant open): usually used to connect the cooling load. When the temperature exceeds the set value, then closed circuit, output signal.
- Temperature controller (constant closed): used to connect the heating load, when the temperature reaches the set value ,off the line.
- Small size, large set range.
- Simple installation and high switching performance.

ID.NO.	型号 Model	描述 describe	尺寸 WxHxD Size WxHxD	控制范围 Control range
30600017	TH05	温度控制器(常开/常闭) Temperature controller (normally open/normally closed)	51x141x53mm	0°C ~ 40°C
30600018	TH06	温度控制器(常开/常闭) Temperature controller (normally open/normally closed)	51x141x53mm	0°C ~ 85°C
30600019	TH07	温度控制器(常开/常闭) Temperature controller (normally open/normally closed)	51x141x53mm	0°C ~ 120°C
30600020	TH08	温度控制器(常开/常闭) Temperature controller (normally open/normally closed)	51x141x53mm	-35°C ~ +35°C